

## 1. To give way means

(2 points)

- a) obligation of the participant of a road traffic to act in such a way that the one that has right of way does not need to change driving direction or driving speed suddenly,
- b) obligation of the participant of a road traffic to act in such a way that the one that has right of way does not need to change driving direction, although he can change driving speed,
- c) obligation of the participant of a road traffic to act such a way that the one that has right of way does not need to change driving speed, although he can change driving direction.

## 2. Tram rail area means

(2 points)

- a) carriageway designated for the traffic of tram, train or other rail vehicle,
- b) part of a road, at which only traffic of tram and non-motor vehicles is allowed,
- c) part of a road designated mainly for the traffic of trams.

## 3. A driver of a small-size motorcycle or bicycle

(2 points)

- a) must not ride on the right shoulder under any circumstances,
- b) may ride on the right shoulder only while bypassing or evading,
- c) may ride on the right shoulder only if movement of pedestrians is not endangered or limited.

## 4. Outside a municipality on a road with two or more driving lanes marked on the pavement in one driving direction, driving

(2 points)

- a) is in the right driving lane; driving in other driving lanes is possible, if it is necessary for bypassing, overtaking, U-turning or turning,
- b) is in the left driving lane,
- c) is in any of the driving lanes.

## 5. Tram rail area increased over the road level or decreased under road level, or that is separated from the road otherwise, mainly with a kerb. can be crossed

(2 points)

- a) only laterally, and at a place that is adjusted for it,
- b) at whatever place, and always laterally,
- c) at whatever place, if there is no tram nearby.

## 6. A driver must not overtake

(2 points)

- a) in an intersection and 200 m in front of an intersection,
- b) a vehicle that changes driving direction to the left and there is no doubt on further change of driving direction,
- c) when driving through a railway crossing.

## 7. In a municipality, a driver may drive at max. speed of

(2 points)

- a) 60 km.h<sup>-1</sup>, and if on a highway in a municipality or on a speedway in a municipality, max. at speed of 110 km.h<sup>-1</sup>,
- b) 50 km.h<sup>-1</sup>, and if on a highway in a municipality or on a speedway in a municipality, max. at speed of 90 km.h<sup>-1</sup>,
- c) 80 km.h<sup>-1</sup>.

**8. A driver must not stop and stand at the stop of the vehicle of regular public transportation at a segment that begins** (2 points)

- a) with a traffic sign for the stop and ends 5 m after the marked stop,
- b) in the distance of 15 m before the mark of the stop and ends by mark of the stop,
- c) with a traffic sign for the stop and ends at the mark of the stop.

**9. On a roundabout standing** (2 points)

- a) is allowed,
- b) is allowed, if it is necessary for fast getting on and getting off of transported persons,
- c) and stopping is prohibited.

**10. At breakdown of lighting or other breakdown disabling the use of lighting, at reduced visibility on the towed vehicle must be turned on** (2 points)

- a) lights on the side to the centre of the road in the front with white non-dazzling light and in the back with at least one red light,
- b) two red lights in the front and in the back,
- c) lights inside the vehicle.

**11. The load on the vehicle must be properly situated, organised and fixed, in order** (2 points)

- a) not to cover headlights and lights of the vehicle, reflecting glasses, plate with registration number and marking of the max. allowed speed,
- b) not to cover headlights and lights of the vehicle and plate with registration number; it is not applied during driving on a highway and on a speedway,
- c) not to cover the name and seat of the vehicle holder present on the vehicle.

**12. If there is disagreement between the vertical traffic signs and horizontal traffic signs,** (2 points)

- a) vertical traffic signs have priority over horizontal traffic signs,
- b) horizontal traffic signs have priority over vertical traffic signs,
- c) participant of a road traffic is obliged to report it to a relevant authority.

**13. When towing a motor vehicle a bar is used**

- a) the distance between vehicles must not be less than 0.5 m,
- b) the distance between vehicles must not be less than 1 m,
- c) its length must be more than 3 m.

**14. Compulsory equipment of a motor vehicle of M and N category is**

- a) reserve windscreen wiper,
- b) light bulb used for internal illumination of the luggage area,
- c) wheel nut and bolt wrench.

**15. If fuel, oil, or other fillings necessary for operation are evidently leaking from the vehicle** (1 point)

- a) driving by this vehicle is possible only at speed not exceeding  $60 \text{ km} \cdot \text{h}^{-1}$ ,
- b) such vehicle is considered to be technically incapable for traffic on road communications,
- c) such vehicle can be used only on tertiary communications.



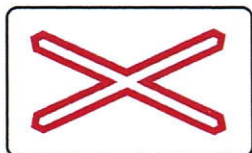




16. This traffic sign warns of a place, where

(2 points)

- a) cattle is often, eventually regularly driven on the road (close to agricultural units, pastures, etc.),
- b) wild animals are often, eventually regularly hunted (close to forest crops, mountain areas, etc.),
- c) wild animals living in the nature in big amount run across the road or where small animals are moving through (in forests, mountain areas, game preserves, etc.).



17. This traffic sign indicates

(2 points)

- a) a single-rail railway crossing,
- b) an intersection of two roads of equal importance,
- c) a railway crossing in the distance of 80 m.



18. This traffic sign means:

(2 points)

- a) No entry for all two-wheeled vehicles,
- b) No entry for small-sized motorcycles,
- c) Path for small-sized motorcycles.



19. This traffic sign

(2 points)



- a) warns on a „T“-shaped intersection,
- b) indicates increase in the number of driving lanes,
- c) orders driving direction indicated by arrows.



20. This traffic sign means:

(2 points)

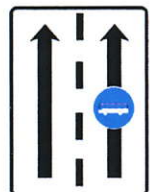
- a) Limitation of the max. allowed speed; indicates by number the max. allowed speed on wet pavement,
- b) First class road; informs on number of this first class road,
- c) Recommended speed; indicates recommended speed in kilometres per hour under normal conditions by a number or numbers designated on the sign.



21. This traffic sign means:

(2 points)

- a) Advanced sign in front of an intersection,
- b) Speedway,
- c) Long-distance advanced sign.



22. This traffic sign indicates

(2 points)

- a) no entry of buses to the right driving lane,
- b) driving lane reserved for buses of regulation public transportation or trolley buses and its situation in relation to other driving lanes,
- c) symbols of vehicles, of which driving in the right driving lane is prohibited.

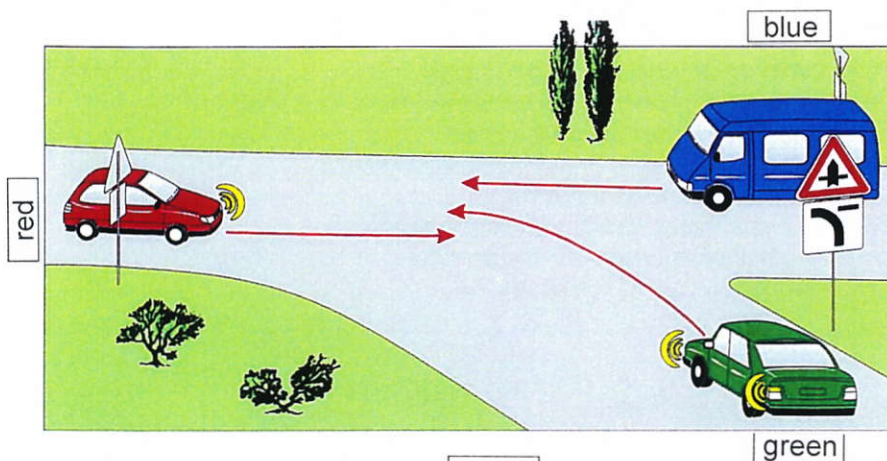


23. This additional panel

(2 points)

- a) indicates type of a vehicle, for which the sign, under which it is situated, is not to be applied,
- b) indicates a parking place for lorries,
- c) limits the validity of a sign, under which it is situated, for the specified type of vehicle.





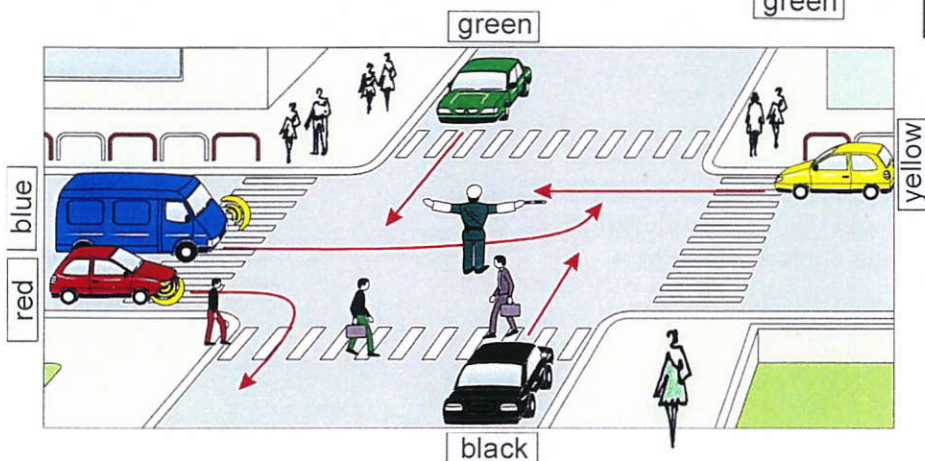
**24. The first vehicle to cross the intersection will be**

- a) the green one,
- b) the red one,
- c) the blue one.

**AUTOŠKOLA BORIS**

Dom odborov Strojár, IV.poschodie  
Vajanského nám. 2, 036 01 Martin  
mobil: 0905 664 476  
tel./fax/zázn.: 043/ 4221 241  
e-mail: info@autoskolaboris.sk  
Skype: boris.hroziencik  
ICQ: 324-910-949  
FB: Boris Hroziencik

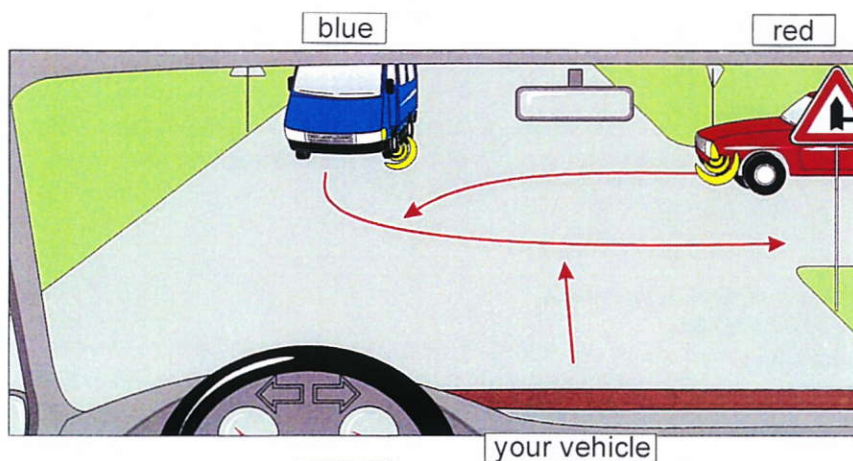
(3 points)



**25. For this instruction of the policeman**

- a) a driver of the blue, a driver of the red and a driver of the yellow vehicle are obliged to stop the vehicle in front of the border of the intersection,
- b) a driver of the black and a driver of the green vehicle is obliged to stop in front of the intersection,
- c) a driver of the black and a driver of the green vehicle can continue in driving; if these drivers observe provisions on turning, they can turn to the right or to the left.

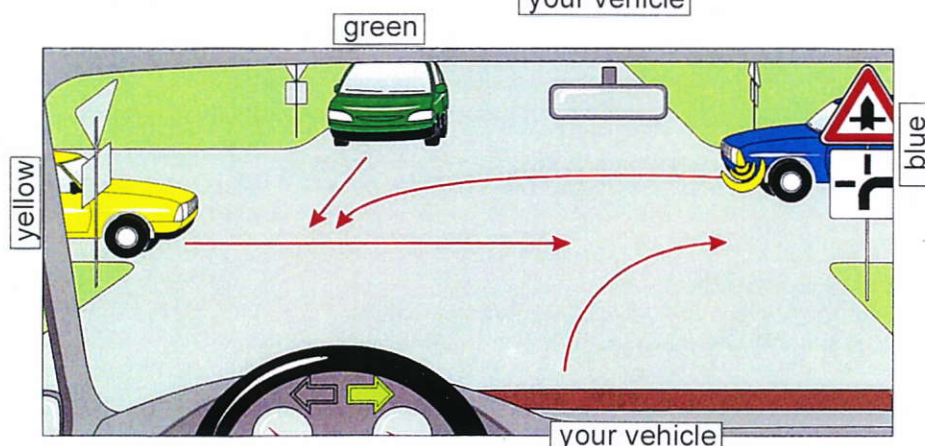
(3 points)



**26. Your vehicle will cross the intersection as**

- a) the second one,
- b) the first one,
- c) the last one.

(3 points)



**27. Vehicles will cross the intersection in the following order:**

- a) 1. your vehicle and the blue one at the same time, 2. yellow, 3. green,
- b) 1. your vehicle and the blue one at the same time. 2. green, 3. yellow,
- c) 1. green, 2. yellow, 3. your vehicle and the blue one at the same time.

(3 points)

**AUTOŠKOLA BORIS** mob.: 0905 664 476  
www.autoskolaboris.sk